

First staff of music. It begins with a treble clef and a 4/4 time signature. The first measure contains four eighth notes. The second measure contains four eighth notes. The third measure contains four eighth notes. The fourth measure contains four eighth notes. The fifth measure contains four eighth notes. The sixth measure contains four eighth notes. The seventh measure contains four eighth notes. The eighth measure contains four eighth notes. The time signature changes to 8/4 for the final measure, which contains eight eighth notes. The staff is labeled with 'R' under the first measure and 'L' under the second measure.


Second staff of music. It begins with a treble clef and a 4/4 time signature. The first measure contains four eighth notes. The second measure contains four eighth notes. The third measure contains four eighth notes. The fourth measure contains four eighth notes. The fifth measure contains four eighth notes. The sixth measure contains four eighth notes. The seventh measure contains four eighth notes. The eighth measure contains four eighth notes. The time signature changes to 8/4 for the final measure, which contains eight eighth notes. The staff is labeled with 'L' under the first measure and 'R' under the second measure.

Third staff of music. It begins with a treble clef and a 4/4 time signature. The first measure contains a single eighth note. The second measure contains four 'x' marks, each with a vertical line above it, representing taps. The staff is labeled with 'R' under the first measure and 'taps' under the second measure.


The Flintstones

UNISON


Snare



Quads



Basses



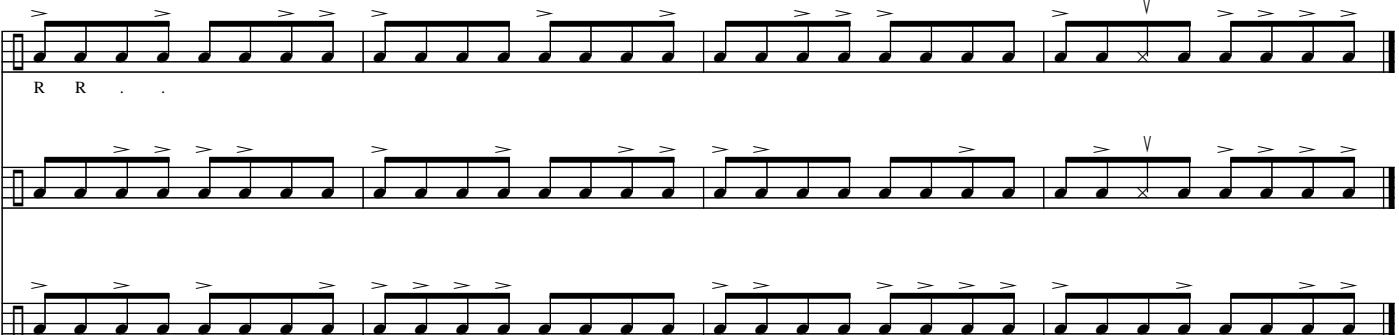
R R

R R

R R

Detailed description: This block contains three staves of musical notation for the 'UNISON' section. The top staff is labeled 'Snare', the middle 'Quads', and the bottom 'Basses'. Each staff begins with a common time signature 'C'. The notation consists of rhythmic patterns of eighth notes with accents. Below each staff, there are two 'R' characters followed by four dots, indicating a specific drumming pattern.

SPLIT



R R

Detailed description: This block contains three staves of musical notation for the 'SPLIT' section. The notation is similar to the UNISON section but includes a 'V' character above a note in the top staff and a 'V' character above a note in the middle staff, indicating a change in drumming technique. Below the top staff, there are two 'R' characters followed by four dots, indicating a specific drumming pattern.

16th GRID

Musical notation for a 16th Grid exercise in 4/4 time. The exercise consists of two systems of four measures each. The first system has a 4-measure phrase, and the second system has a 4-measure phrase with repeat signs at the beginning and end. Each measure contains a triplet of 16th notes. The fingerings are: R R R R, L L L L, R R R R, L L L L in the first system; R R L L, R R L L, R L R L, R L R L in the second system. A final measure shows a single 16th note with a fingerings 'R'.

Triplet Grid

Musical notation for a Triplet Grid exercise in 12/8 time. The exercise consists of three systems of four measures each. Each measure contains a triplet of 8th notes. The fingerings are: R L R L, L R L R, R L R L, R L R L in the first system; R L L R, R L R L, L R R L, L R R L in the second system; R R R L, L L R R, R L L L, R L L L in the third system. A final measure shows a single 8th note with a fingerings 'R'.

Boston

The first staff of music is in 12/8 time, indicated by the '12' over the '8' in the time signature. It begins with a treble clef and a key signature of one flat. The melody consists of a series of eighth notes, grouped into six measures. Each measure contains four eighth notes. Above each group of four notes is an accent (>). Below the staff, the notes are labeled with 'R' for right hand and 'L' for left hand. The sequence of labels is: R, R, R, R, R, R, L, L, L, L, L, L, R, L, R, L, R, R, L, R, L.

The second staff of music is in 12/8 time, indicated by the '12' over the '8' in the time signature. It begins with a treble clef and a key signature of one flat. The melody starts with a quarter note on the first line, followed by a quarter rest, and then two eighth notes on the first line. Above the first note is an accent (>). The staff ends with a double bar line.

A-B-C

Snare

A



rr rr rr rr r r | ll ll ll ll l l | rr rr r ll ll l | rr rr r ll ll l

Musical notation for Snare part A in 4/4 time. It consists of four measures. The first measure has a snare drum pattern: eighth notes on the first and third beats, and quarter notes on the second and fourth beats. The second measure has a snare drum pattern: quarter notes on the first and third beats, and eighth notes on the second and fourth beats. The third measure has a snare drum pattern: quarter notes on the first and third beats, and eighth notes on the second and fourth beats. The fourth measure has a snare drum pattern: quarter notes on the first and third beats, and eighth notes on the second and fourth beats.

B



r rr rr rr rr r | l ll ll ll ll l | r rr rr l ll ll | r rr rr l ll ll

Musical notation for Snare part B in 4/4 time. It consists of four measures. The first measure has a snare drum pattern: quarter notes on the first and third beats, and eighth notes on the second and fourth beats. The second measure has a snare drum pattern: quarter notes on the first and third beats, and eighth notes on the second and fourth beats. The third measure has a snare drum pattern: quarter notes on the first and third beats, and eighth notes on the second and fourth beats. The fourth measure has a snare drum pattern: quarter notes on the first and third beats, and eighth notes on the second and fourth beats.

C



r r rr rr rr rr | l l ll ll ll ll | r r rr rl l ll l | r r rr rl l ll lr

Musical notation for Snare part C in 4/4 time. It consists of four measures. The first measure has a snare drum pattern: quarter notes on the first and third beats, and eighth notes on the second and fourth beats. The second measure has a snare drum pattern: quarter notes on the first and third beats, and eighth notes on the second and fourth beats. The third measure has a snare drum pattern: quarter notes on the first and third beats, and eighth notes on the second and fourth beats. The fourth measure has a snare drum pattern: quarter notes on the first and third beats, and eighth notes on the second and fourth beats.

Triplet Double Beat

12/8

R R R R R R R R R R R R L L L L L L L L L L L L R L

R R R R R R R R L R L L L L L L R L R R R R R R L R L L L L L L R L

R R R L R L L L R L R R R L R L L L R L R R R L L L R R L L R R L L R R L L

R

Trip Did Roll

12/8

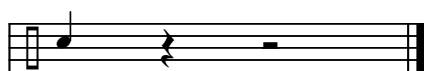
R R R R R R R R L R R R

L L L L L L L L R L L L

R R R R L R

L L L L R L

Hugga-Digga Burr



Cadence Exercise #1



Cadence Exercise #2



Para Tap

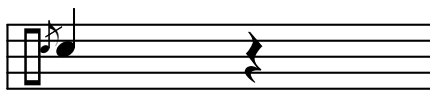
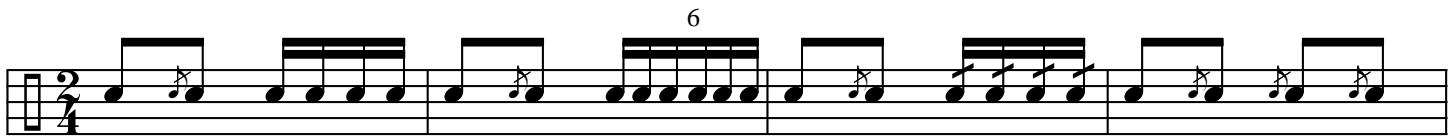
12/8

R R R R R R R L R R R L R R R L R R L L R R L L R L R R L R L R R

L L L L L L L R L L L R L L L R L L R R L R L L R R L R L L

R

DENNY'S COMBO'S



Kickin' It Reggae Style

Michael Huestis

♩ = 112

Musical score for Snare, Tenors, Basses, and Cymbals. The score is in 4/4 time and consists of four measures. The Snare and Tenors parts are mostly rests. The Basses part starts with a dynamic marking of *f* and features a rhythmic pattern of eighth notes with accents and triplets. The Cymbals part starts with a dynamic marking of *f* and features a rhythmic pattern of eighth notes with accents.

Musical score for SD, TN, BD, and CY. The score is in 4/4 time and consists of four measures. The SD part starts with a dynamic marking of *mp* and features a rhythmic pattern of eighth notes with accents, increasing to *f* and *ff*. The TN part starts with a dynamic marking of *mf* and features a rhythmic pattern of eighth notes with accents, increasing to *f*. The BD part starts with a dynamic marking of *mp* and features a rhythmic pattern of eighth notes with accents, increasing to *f*. The CY part features a rhythmic pattern of eighth notes with accents.

Musical score for SD, TN, BD, and CY with rhythmic notation. The score is in 4/4 time and consists of four measures. The SD part starts with a dynamic marking of *f* and features a rhythmic pattern of eighth notes with accents, with the notation *RL R LL R LLR* above the first measure. The TN part starts with a dynamic marking of *f* and features a rhythmic pattern of eighth notes with accents, with the notation *RL R RL R RLRL B* above the first measure. The BD part starts with a dynamic marking of *f* and features a rhythmic pattern of eighth notes with accents, with the notation *R R L L R* above the first measure. The CY part features a rhythmic pattern of eighth notes with accents.

13 >

SD *ff*

TN

BD *ff* *mf*

CY *ff* *mf*

R R L L R R L L

17 >

SD *fp*

TN *fp*

BD *fp*

CY *f*

21 >

SD *ff*

TN *ff*

BD *ff*

CY *f* *f*

R L R L R L R L R L R L

Kickin' It Reggae Style

Snare

Michael Huestis

• = 112

4

mp

6

f *ff*

9

f

R L R L L R L L R L R R R R R R

11

R L R L R L R L R L R L R L

13

ff *fp*

3

19

21

ff

3 3 3 3


Kickin' It Reggae Style, page 2

24 
f R L R L R L L R L R L L R L R L

26 
R L R L R L R L

28 
R L R L R

31 
fp R L R R L L R R L R R L R R R L L L R R R L L L

32 
f R L R L R L etc.

34 
fff R B R L L R

Kickin' It Reggae Style

Tenors

Michael Huestis

$\bullet = 112$

6

mf *f*

9

f R L R R L R R L R L B R L R L R B B B

11

R L R L L R L R L R L R L R L R L R L R

rim click

13

15

L R R R L L R R L L

17

R *fp*

19

21 *ff* R L R L R L R L R L R L R L R L

24 *f* R L R L R L L R L R L L R L R L

26 R L R L R L R L

28 B R L R L R L R L R L R B B

30 B *fp* R L R R L L R R L R R L R R L L L R R R L L L

32 R L R L R L etc. *f*

34 R R R L L R *fff*

Kickin' It Reggae Style

5 Basses

Michael Huestis

$\bullet = 112$

f

mp

f

f

f

R R L L R R L L L R R R

R R L L R

© 1994 Copyright Michael Huestis

13 >

ff mf

17 >

f p

19

21 >

ff

24 >

f

26 >

f

Hey Shorty

Quads

1

R R L L R L R L R R L L R L R B B R R L L L R L R L L R L R L

4

R L R L L R L R

7

R L L L R L B B B R L R R L L R L

10

R R L L R R R R R R L L R R R

13

6 6 6 6 6 6 3 B

R R R R R L R L R L R L R L R L R B

RH on 3rd Rim

Hey Shorty

1 R R L L R R L L R L R R L R R L R R L R R L R R R R

1 R R L L R L R L R R L L R L R B B R R L L L R L R L L R L R L L R L R

1 R R R L R R L R L R R L R R L R R L R R L R R L R L

5 L R R R R L R R R R R R R R L L R L R L R B B R

5 R L L L R R L R L R L L R R L R L L R L L R R R R L

5 R L L L R R L R L R L R L L R L L R R R R L R R R L

9 R R L L R L R L R L R L R R R L R R R L R R R L

9 R L L L R L R R L L R R R R R R R L L R R R R

9 R L L R L L R R R R R L R R R R R R R R R R L

13 R R L R B

13 R R R R L R L R L R L R L R B

13 R R R L R L L R L R

LH Crush Buzz

Stick-on-Stick Clicks

RH on 3rd Rim

R/L Crush Buzz

SPLIT EVERY-OTHER

RH Rim Clicks